

SOLUTION BRIEF

# Cost Optimization



AI-powered strategies to help maintain efficiency and manage cloud costs

## Deliver highly available, reliable, and efficient services and applications

Hybrid Observability paired with deep insights into multi-cloud resource capacity and utilization helps Platform Engineering and CloudOps teams optimize resources that power services and applications. When layered into Hybrid Observability, these teams can quickly act to remove excess cloud costs while maintaining optimal performance.

Part of LM Envision, the Hybrid Observability platform powered by AI, Cost Optimization helps teams rightsize cloud features, gain predictability, and maintain optimal SLAs.

## BENEFITS

- See multi-cloud cost patterns and do something about it. Get better visibility into resource utilization patterns to make better allocation decisions that drive efficient IT consumption.
- Adjust cloud resources so they're a good fit. Match resources to performance requirements to keep the right cloud mix to maintain apps and workloads.
- Stop firefighting cloud costs. Start driving a cost-effective cloud operations practice.



**WITH ZERO SETUP, WE USED THE NEW COST OPTIMIZATION FUNCTIONALITY IN OUR LOGICMONITOR ENVIRONMENT.**

We started seeing both compute and storage recommendations that will result in substantial savings. Cost Optimization revealed several EC2 instances that were either not used anymore, or over-provisioned with clear evidence for deletion or downsizing. It also provided a list of unattached storage that we can immediately put into action."

**Randall Thomson, VP Technical Operations, LogicMonitor**

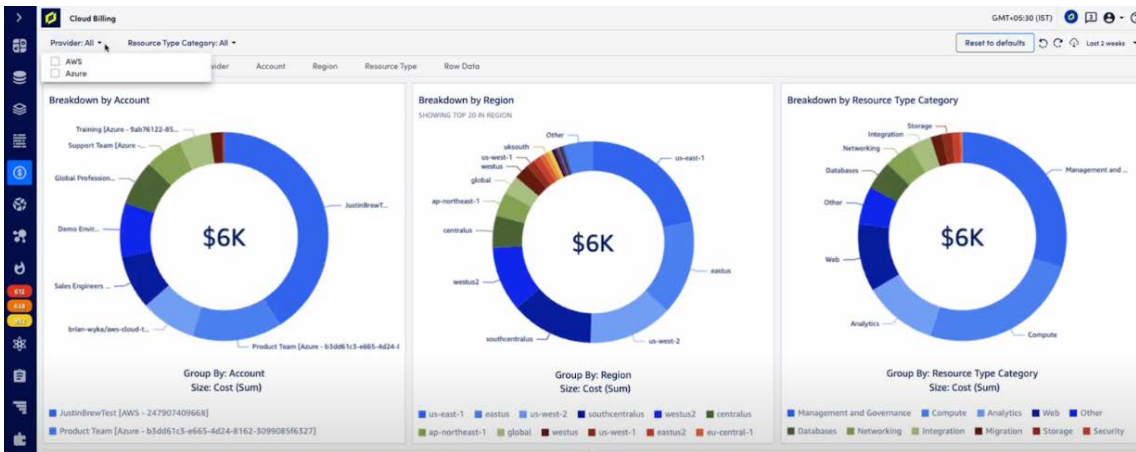
**FEATURES**

**Cloud Billing (AWS and Azure)**

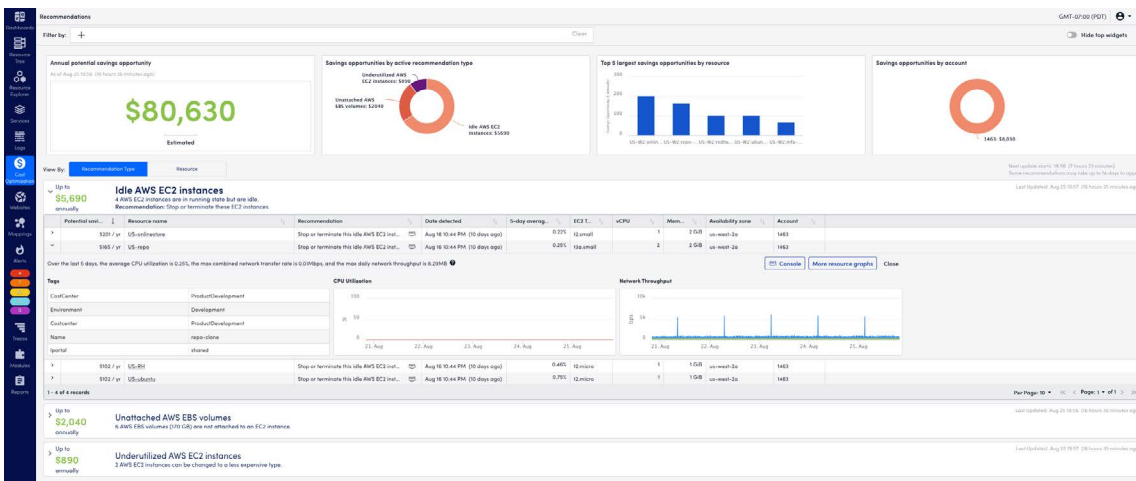
- Fully visualize multi-cloud spend in a single view
- Easily slice and dice cost data to get deeper insights and trends into cloud bills
- Filtered tags such as account, region, provider, resource type, and more to analyze spend allocation and identify changes

**Cloud Recommendations**

- AI-powered recommendations that improve cloud investments while maintaining performance
- Suggestions into cost-savings options such as capacity changes, deleting unused resources, and more
- Includes criteria such as disk activity for more detail, to get deep knowledge of what's happening in the resource before taking action
- Generally available for AWS compute and storage
- Azure compute and storage currently available as a beta program



Multi-cloud billing visibility



Proactive cost savings recommendations

**Want to learn more about LogicMonitor's Cost Optimization capability?**  
 Contact your CSM to Account Manager today for personalized assistance.